

# Environmental Science Programs



## A Day in Nature with the Audubon Naturalist Society



ONLINE REGISTRATION NOW AVAILABLE. REGISTER TODAY!

[www.anshome.org/school](http://www.anshome.org/school)



### A Day in Nature with the Audubon Naturalist Society

#### Sample Program: Discovery Hunt

- 10:00 am Welcome to the sanctuary.
- 10:15 am We set off on our hike and the hunt begins! We start at an open field to observe the sky.
- 10:30 am As we make our way through the meadow, we search for deer and insect life.
- 11:00 am We hike through the forest, listen for birds, smell native plants, and find animal tracks and signs.
- 11:25 am At the pond, we look for animals that make the water their home.
- 11:30 pm Time for a picnic lunch and nature play.
- 12:00 pm We head back to school.

For more information on how these programs connect to your **science curriculum** and **standards** please visit us online at [www.anshome.org/school](http://www.anshome.org/school)

### Choose Your Location

1. Your Classroom or Schoolyard
2. Woodend Sanctuary  
8940 Jones Mill Road, Chevy Chase, Maryland  
TEL 301-652-9188 x17
3. Rust Sanctuary  
802 Childrens Center Road, Leesburg, Virginia  
TEL 703-669-0000



### Program Fees

\$7.75 per student (\$124 minimum)

Register and find FAQs at [www.anshome.org/school](http://www.anshome.org/school)

### More Options for Your School

Afterschool Programs  
[www.anshome.org/afterschool](http://www.anshome.org/afterschool)

Maryland Green School and Virginia Naturally certification  
[www.anshome.org/greenkids](http://www.anshome.org/greenkids)

Schools Out Camps  
[www.anshome.org/schoolsoutcamp](http://www.anshome.org/schoolsoutcamp)



AUDUBON NATURALIST SOCIETY  
Connecting People with Nature in the DC Region

[www.anshome.org](http://www.anshome.org)



## Amazing Animals

### Birds of a Feather

On a hike, we will identify native birds and explore **life cycles**, behavior, **anatomy**, and seasonal **adaptations** while learning about nesting and migration. Students will explore **characteristics** of birds through hands-on activities.

### Reptile or Amphibian

Students will meet a live reptile and learn about the amazing **adaptations** of these creatures and how **habitats** meet their need for **food, shelter, water**, and places to raise young.

### Decomposers: Life in the Soil

We'll dig through soil to examine the world of fascinating **insects** and **worms** that live in this **micro-habitat**. In this **hands-on program**, students will study the importance of our **decomposers in our nutrient cycle**.

### Life Cycles

We will investigate stability and change while learning about **life cycles** of animals and insect **metamorphosis** through the seasons. Students will learn the different **developmental stages** of various **life cycles**.

### Skull & Scat Sleuths

We will **analyze and interpret data** to identify mystery **mammals** using skull and scat models, and then **investigate** animal **evidence** on a nature hike. Students will learn to recognize the many physical and behavioral **adaptations** of animals.

## Fantastic Forest

### Discovery Hunt

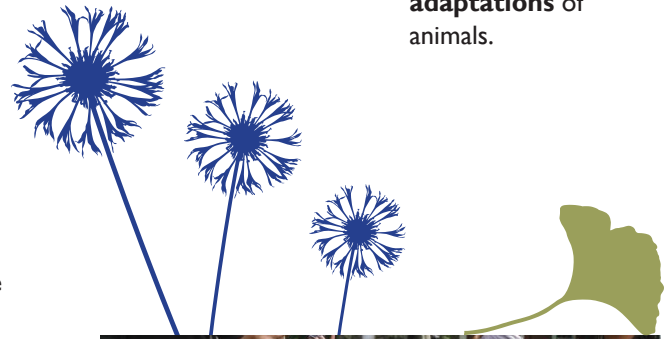
We will spark student interest in **science** in our most popular program! On a nature walk full of **sensory exploration, look** under logs, **listen** for birds, **feel** the bark of a tree, and **smell** the different plants we encounter on our walk.

### Backyard Botany

We will search our sanctuary or schoolyard to learn about **plant structures** and **adaptations**. Students will become experts in **plant science** including **photosynthesis, flowers, seeds, and pollination**.

### Compost in Action

We will explore the **energy cycle** of decomposition, regeneration, and growth in our forests. Students will learn how to **compost** at home or at school and how they can become stewards of the **environment**.



## Wonderful Water

### Pond Exploration

In this **hands-on experience**, we will use dip nets to scoop tadpoles and discover the animals and plants that call our pond **habitat** home. Students will explore aquatic **food webs** and the **seasonal changes** that occur in this **ecosystem**.  
*(Fall and Spring only)*

### Stream Science *(Woodend only)*

Students use **tools of science** to look for indicators of stream health by conducting **water quality experiments**, such as testing for dissolved oxygen and pH. We will look at the **habitat** surrounding the stream to determine how it also contributes to the stream's health.  
*(Fall and Spring only)*

### Watershed in Your Classroom

We will use a **model** to understand your **local watershed** and **human impacts** on water quality. Emphasis placed on understanding how water flows in the schoolyard or **"school-shed"** and how that affects the larger **Chesapeake Bay watershed**.

