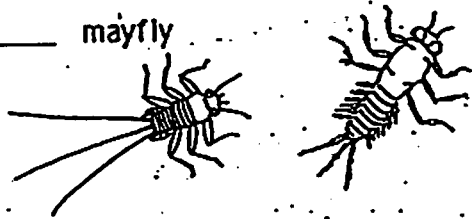


**INVERTEBRATE SURVEY:**

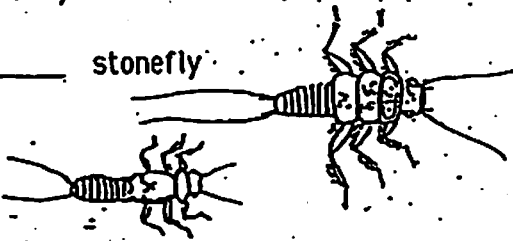
For every animal you find, make a tally on the line before the name.

**GROUP 1--Clean water.**

\_\_\_\_\_ mayfly



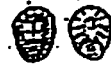
\_\_\_\_\_ stonefly



\_\_\_\_\_ caddisfly



\_\_\_\_\_ water penny



\_\_\_\_\_ riffle beetle



\_\_\_\_\_ gilled snail  
(opening on the right)

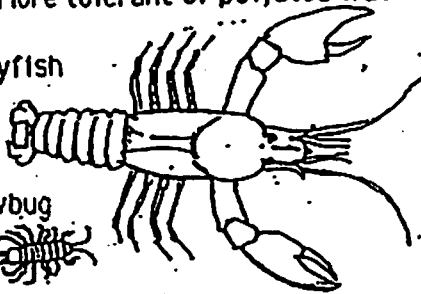


\_\_\_\_\_ helgrammite



**GROUP 2--More tolerant of polluted water.**

\_\_\_\_\_ crayfish



\_\_\_\_\_ sowbug



\_\_\_\_\_ scud



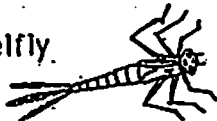
\_\_\_\_\_ alderfly



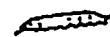
\_\_\_\_\_ fishfly



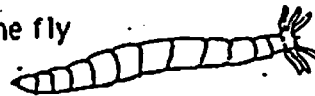
\_\_\_\_\_ damselfly



\_\_\_\_\_ watersnipe fly



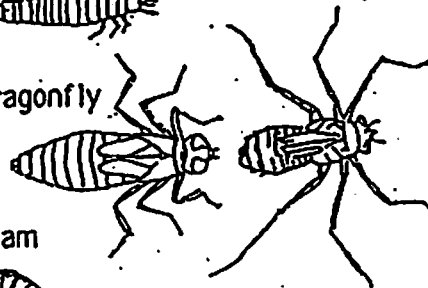
\_\_\_\_\_ crane fly



\_\_\_\_\_ beetle larva



\_\_\_\_\_ dragonfly



\_\_\_\_\_ clam

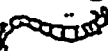


**GROUP 3--Most tolerant of polluted water.**

\_\_\_\_\_ worm



\_\_\_\_\_ midge fly



\_\_\_\_\_ black fly



\_\_\_\_\_ leech



\_\_\_\_\_ pouch snail  
(opening on the left)



\_\_\_\_\_ other snails

